

Digital Floating Control Thermostat

B2011LB-F3&B2011PS-F3 SERIES

Non-Programmable or Programmable CE Approval



Indoor Air Quality
Beltéri Levegőminőség Kft.
www.iaq.hu

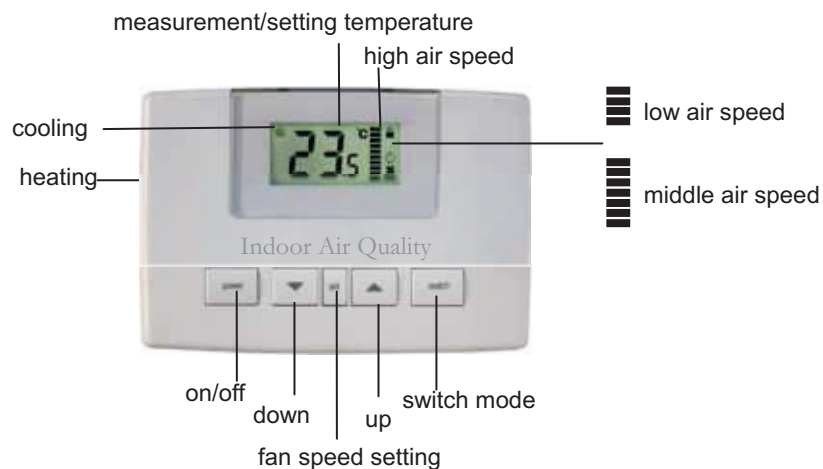
The digital thermostat provides proportional-integral(PI) individual room temperature control with tri-state (floating) proportional control in zoned commercial heating, ventilation, and air conditioning systems.

Features

- ① PID (proportional and integral) control action provides
- ① accurate, stable room temperature control.
- ① LCD can display working status such as room temperature,
- ① set point, device mode, etc. Makes reading and
- ① operating easy and accurate.
- ① All models feature user-friendly set point buttons
- ① Large set point adjustment
- ① Different models for different floating control system such as FCU system with single fan or 3-speed fan and a aux. electric heater, air system with an air damper, single fan and etc.
- ① Motor timing selectable from 10 seconds to 420 seconds continued. It will be used with all actuators.
- ① Two floating outputs models feature automatic changeover with 1.5¥ ~ 3¥ selectable zero energy band.
- ① Low temperature protection
- ① Programmable is optional
- ① 5/2 days weekly programmable makes life and working
- ① more comfortable and convenient.
- ① Two-part structure and quick wiring terminal block make mounting easier.
- ① RS485 communication option makes the thermostat connecting with a PC or other systems.
- ① External temperature sensor optional
- ① Blue backlight display optional
- ① Infrared Remote Control (optional)
- ① Key-Card option just for hotels with FCU system

Buttons and LCD

B2011PS type



B2011LB type



Specifications

Power supply	220VAC± 10% 50/60 HZ 110VAC± 10% 50/60 HZ 24 VAC± 20% 50/60 HZ
Terminal output rating	2 amp (resistant load)
Sensor	NTC
Temperature Control Range	5-35 °C
Accuracy	± 0.5 °C
Display	LCD (blue backlight optional)
Motor action time	10 seconds~420 seconds selectable
Weight	B2011PS type:280g B2011LB type:240g
Dimensions	B2011PS type: 130mm(L)x 90mm(W)x 32mm(H) B2011LB type: 120mm(L)x 90mm(W)x 24mm(H)
Mounting Standard	Mounting on the wall, 2"x 4" or 65mmx 65mm box
Housing	PC/ABS fireproofing material

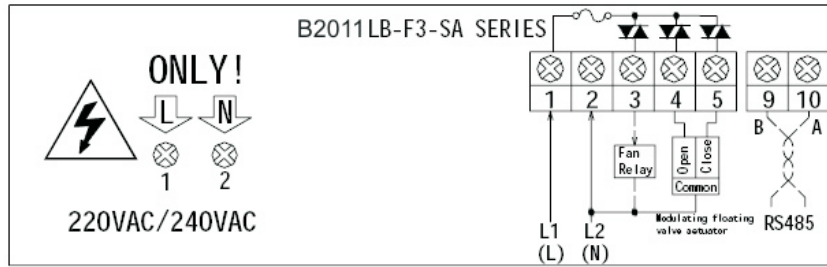
Models

Type	Model	Characteristic
B2011 Floating Control Thermostat	B2011LB-F3-SA -(A)/(B)/(C)	One floating output, a single speed fan control (A): 220 VAC/110VAC power supply (B): 110VAC power supply (C): 24 VAC power supply
	B2011LB-F3-SA-K -(A)/(B)/(C)	One floating output, a single speed fan control. Key-card function for hotels.
	B2011PS-F3 -(A)/(B)/(C)	One floating output, a 3-speed fan control
	B2011PS-F3-E	One floating output, a 3-speed fan control, also one electric heater control. Power supply: 220VAC for fan and electric heater. 24VAC for motorized valve
OPTIONS		
Accessional Options	Programmable- CK4	Can be set weekly 5 day/2 day with four times of four temperature.
	Remote Control- R	Infrared control with in 6 meters range
	Sensor External- W	Temperature sensor is external except B2011PS-F3-E
	Backlight LCD- EL	Blue backlight of LCD
B2011PS-DF3 Floating Thermostat		
Double floating control thermostat	B2011PS-DF3	Two floating outputs, 3-speed fan control manually; heating and cooling changeover automatically with dead zone setting

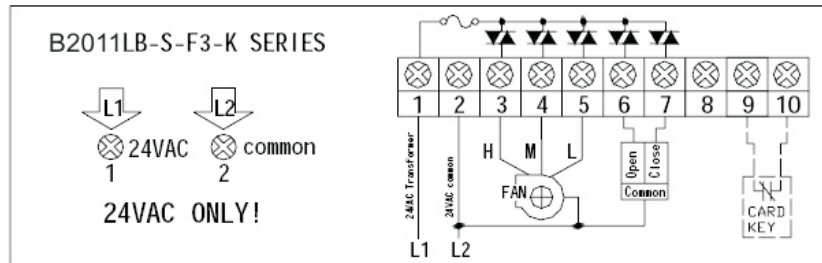
If you need RS485 communication, please contact with us.

Wiring Diagrams

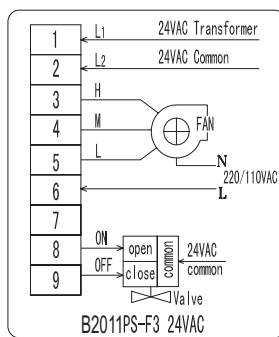
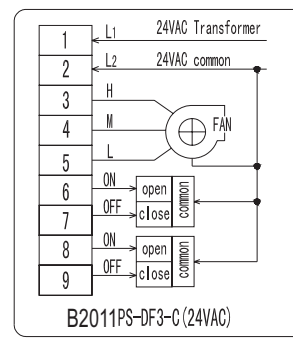
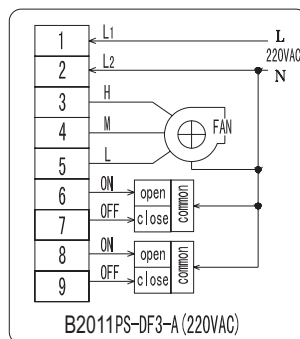
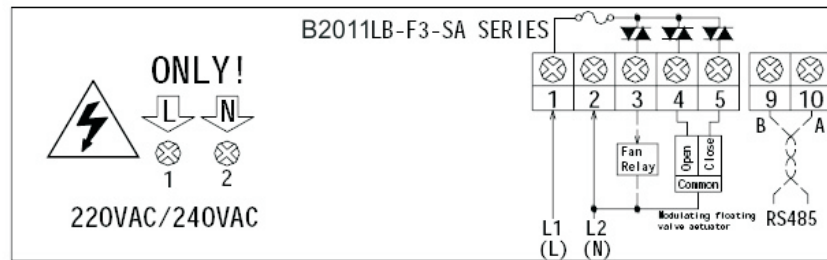
B2011LB-F3-SA-(A)



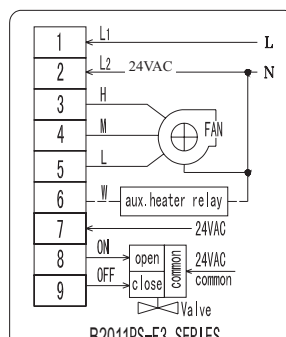
B2011LB-F3-SA-K



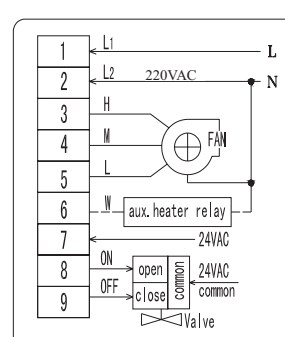
B2011LB-F3-SA-(C)



B2011PS-F3-(B)-



B2011PS-F3-(C)-2



B2011PS-F3-(A)